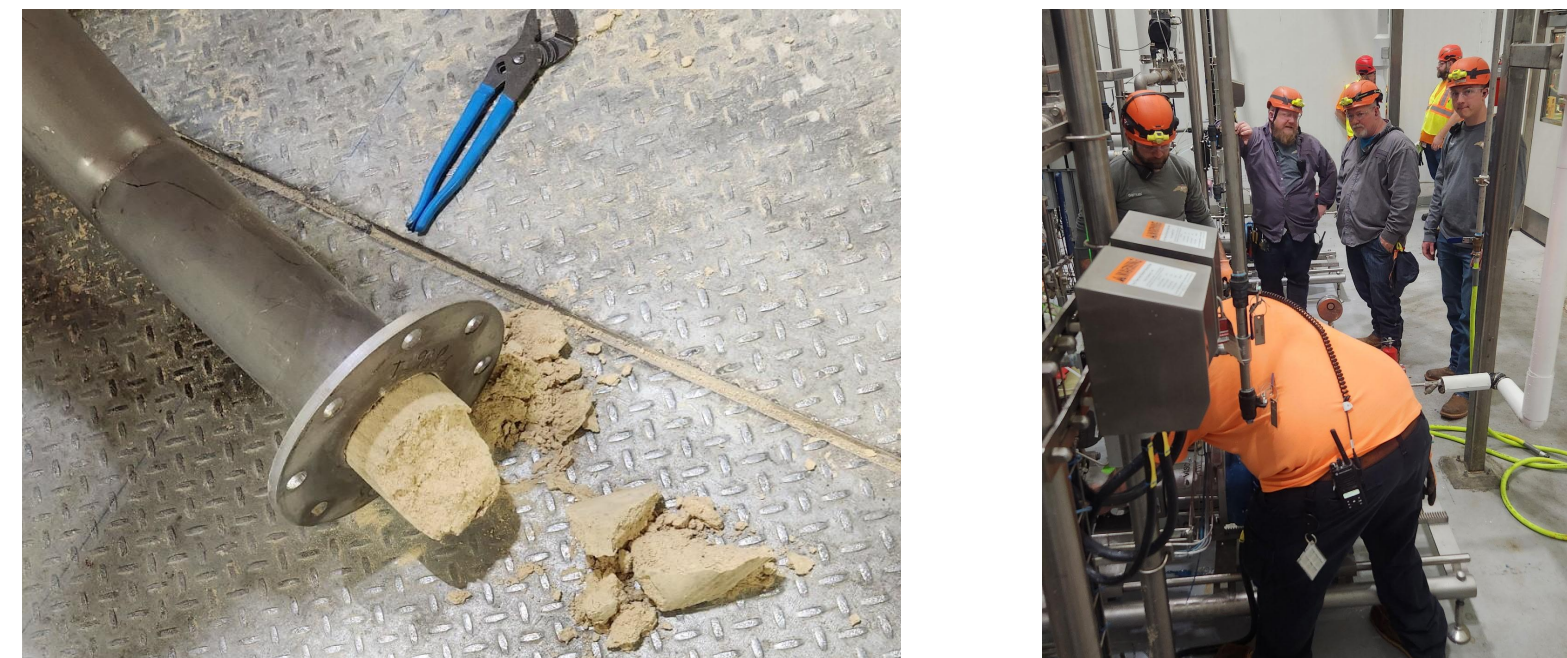


Problem Statement

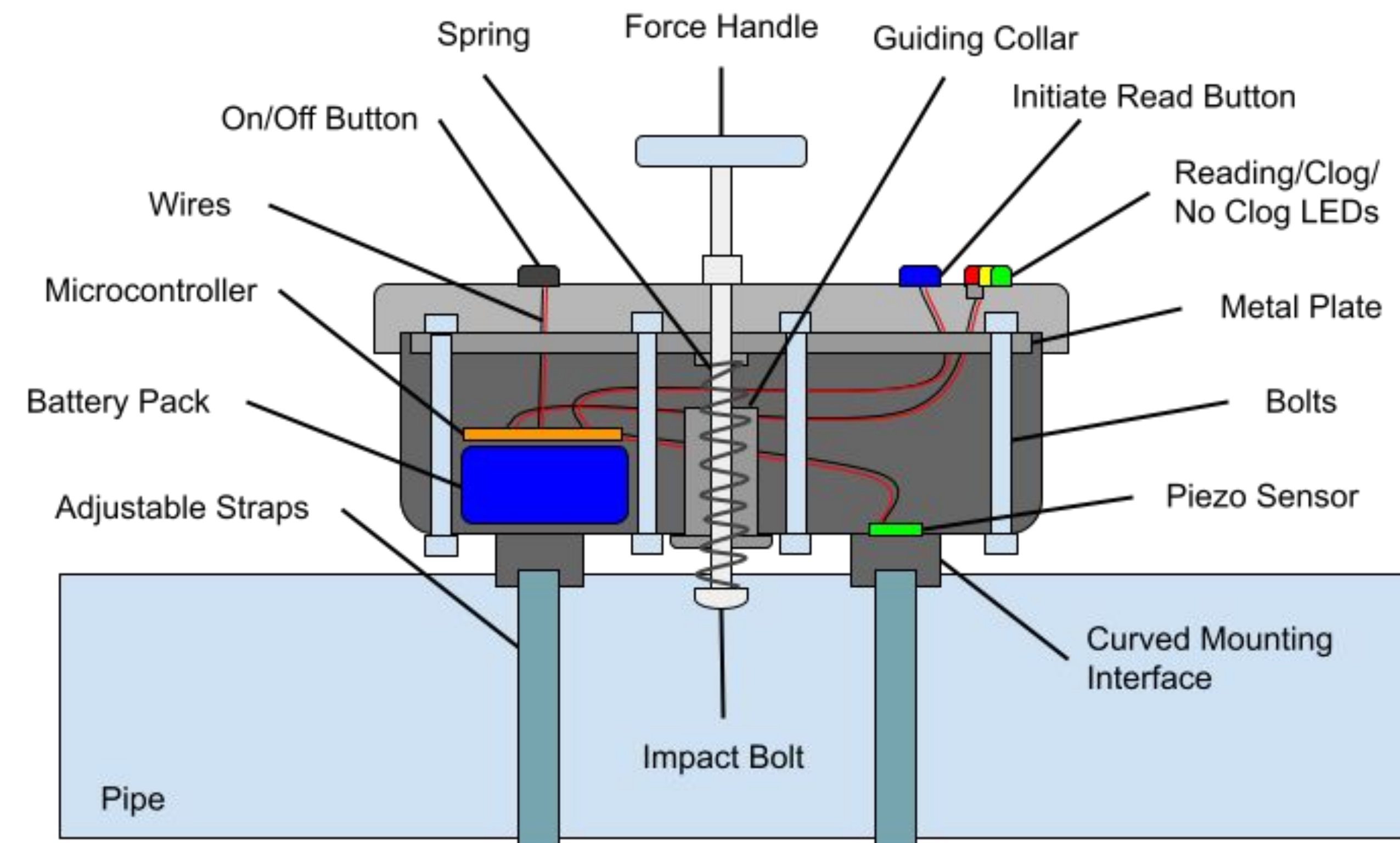
Manufacturing facilities experience significant downtime when clogs form in pipes moving finely-ground solids because there are currently no devices to locate the clogs.



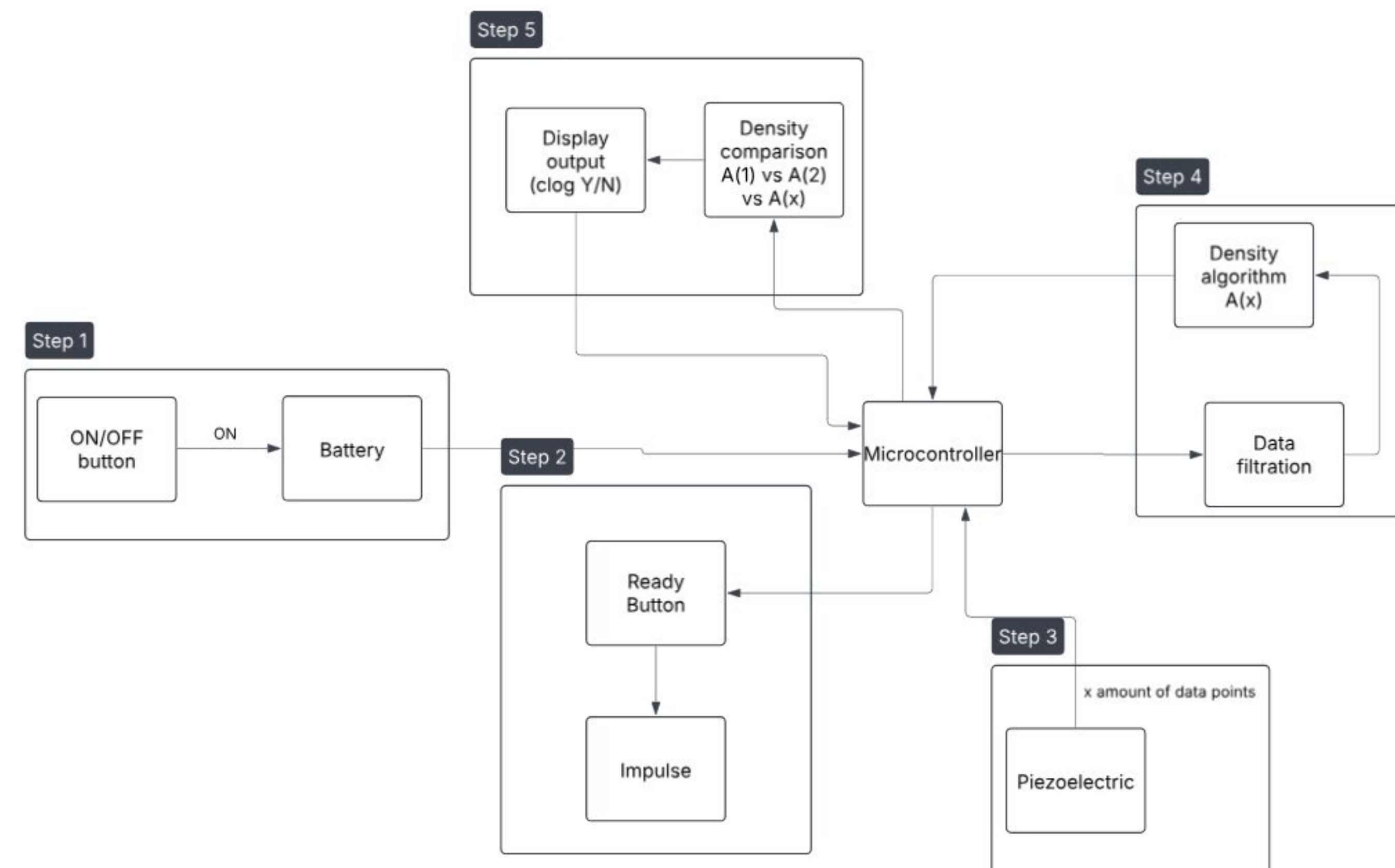
ClogSense

- Portable device that is attached to the outside of a pipe
- Indicates the presence of a clog inside in less time
- Eliminates need to dismantle the pipe piece by piece
- Mitigates downtime and wasted material

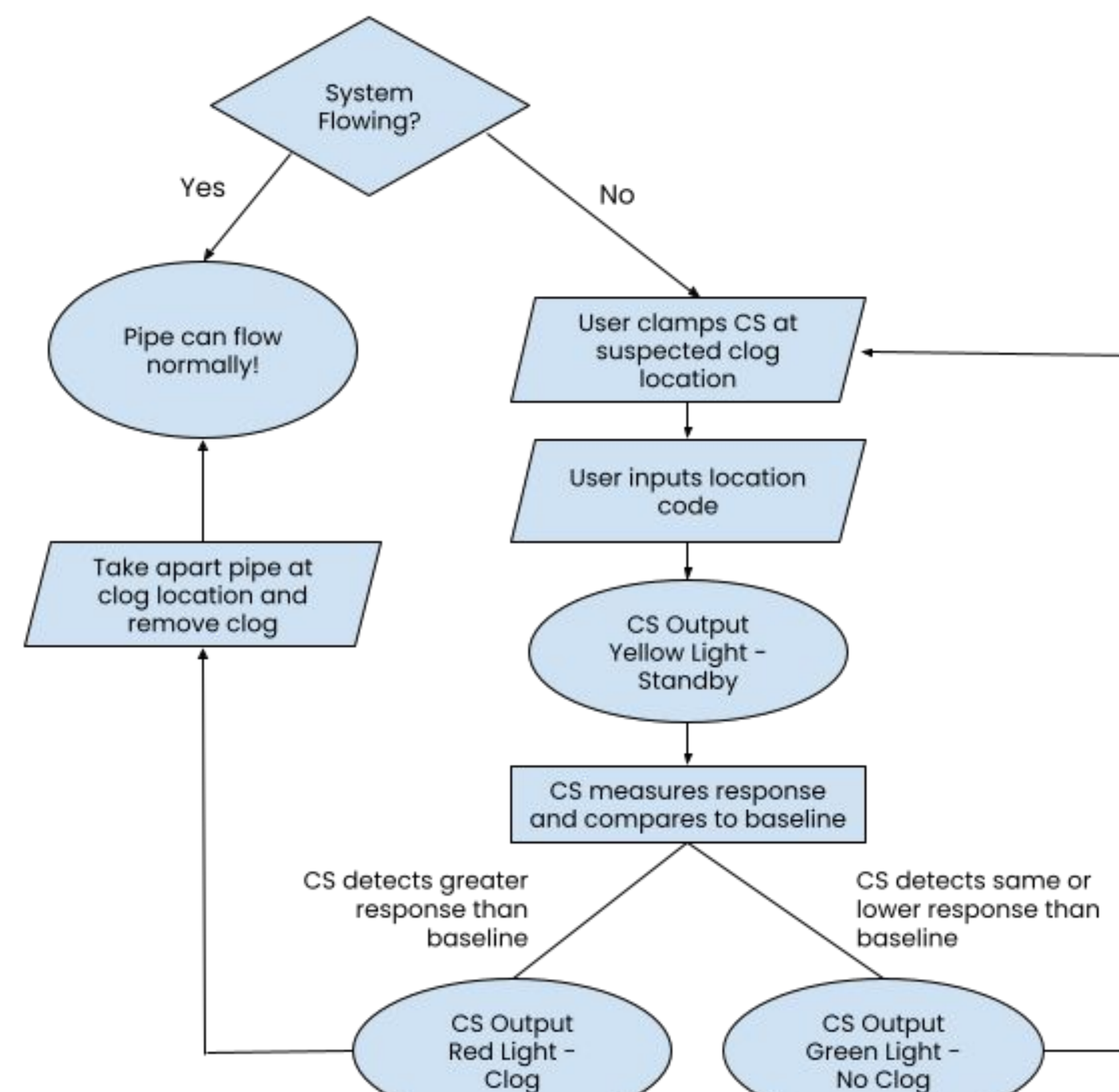
System Diagram



System Block Diagram



User Operation Flow Chart



Competition Analysis

Attribute	Bulk Flow Measurement Devices	Handheld Flow Measurement Devices	ClogSense
Portable	✗	✓	✓
Works on Solids	✓	✗	✓
Measures Flow	✓	✓	✗
Locates Clogs	✗	✗	✓
Displays Results	✗	✓	✓

Siemens Bulk Solids Flow Meter



Panametrics Ultrasonic Liquid Flow Meter



Promotion and Distribution Strategy

- Distribution: Target facilities in North Carolina and neighboring states, then expand to farther regions
- Promotion through:
 - Traveling salesperson to visit facilities for demos
 - Marketing at trade shows and trade magazines
 - Listed on ClogSense website and online industrial distributors
- Price: \$20,000/unit

Company Size

Operation Facility Size: 240 sqft

Year	2028 (\$)	2027 (\$)	2026 (\$)
Products Manufactured	65	40	17

Financial Highlights

	2028 (\$)	2027 (\$)	2026 (\$)
Expected Revenue (3 years)	1,200,000	740,000	300,000
COGS (3 years)	4,866.00	3000.70	1216.50
Gross margin	1,195,134.0	736,999.30	298,783.50
Return on assets	71.7%	44.2%	17.9%
Valuation	2,100,000	N/A	N/A
IRR	34.3%		
Months to Breakeven	24 months		
Payback Period	34 months		

ClogSense Founders



Andrew Hammock
CMO



Carrie Horrell
CDO



Ari Izzo
COO



Angela Johns
CFO



Lucy Polzin
CEO